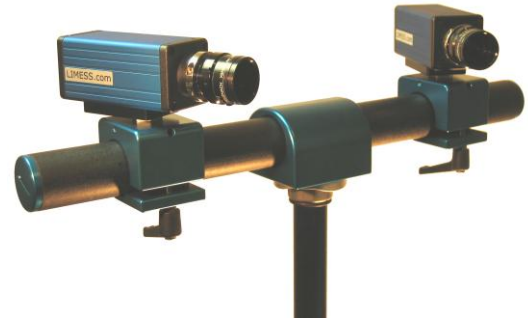


VIC 3D

MEASUREMENT SYSTEM FOR CONTOUR, DISPLACEMENT, DEFORMATION AND STRAIN

[Principle]

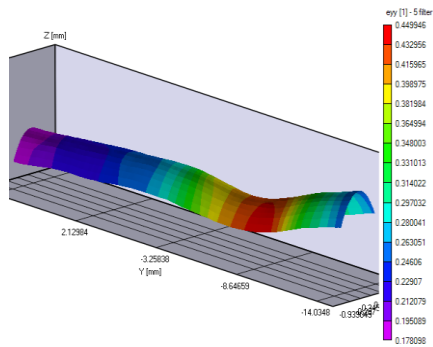
Based on a digital image correlation technique and the stereoscopic principle of the setup with two cameras objects contour, displacement and strain is measured, contactless and fullfield with **Vic3D**.



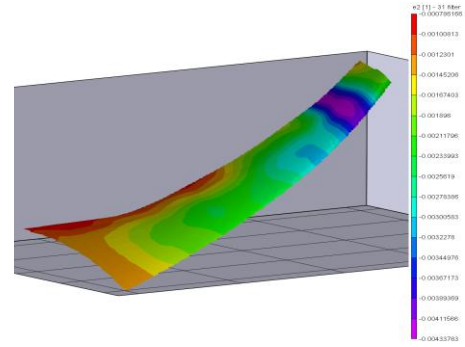
[Applications]

Material- and stability tests, determination of material parameters, component tests, usage in tension test machines, validation of FEM calculations, exploration of cracks, measurements at airplane components (A380, static and dynamic), dynamic tests like crash tests, pedestrian safety tests and airbag cover optimization.

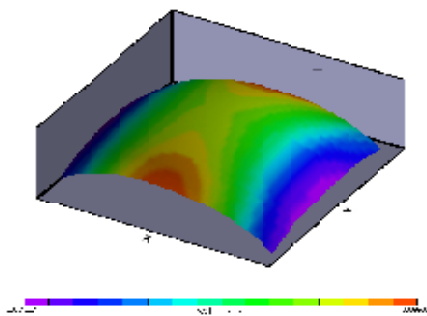
[Examples]



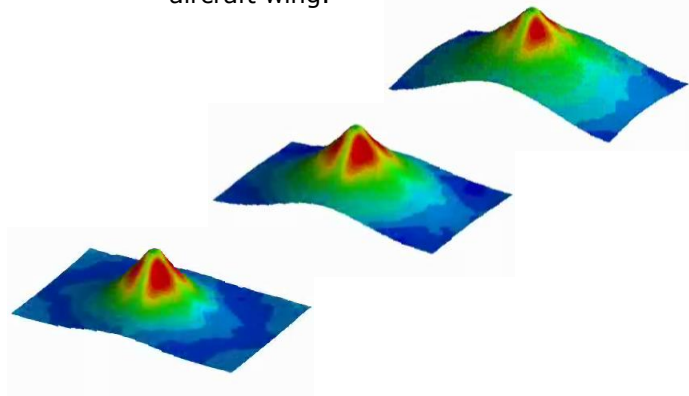
Strain distribution E_{yy} at a tension test with necking.



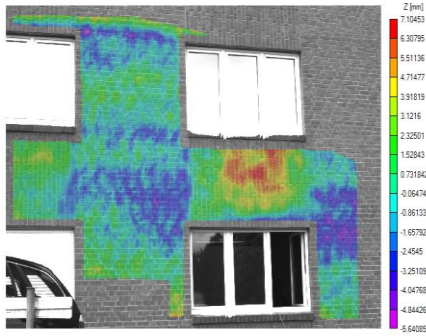
Strain distribution e_2 of an aircraft wing.



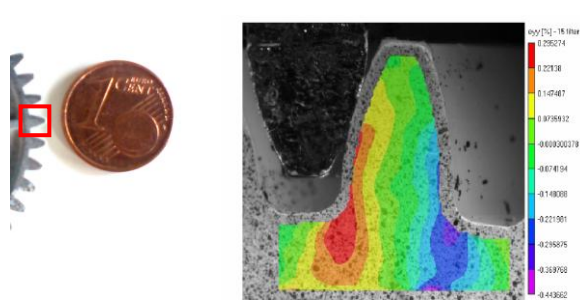
Membrane E_{yy} strain component.



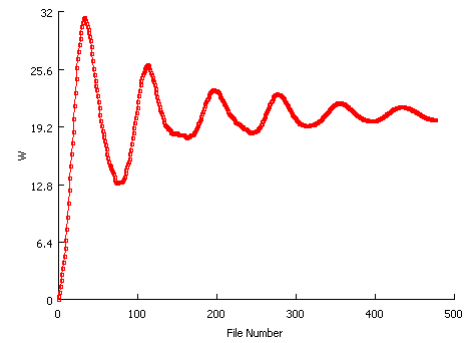
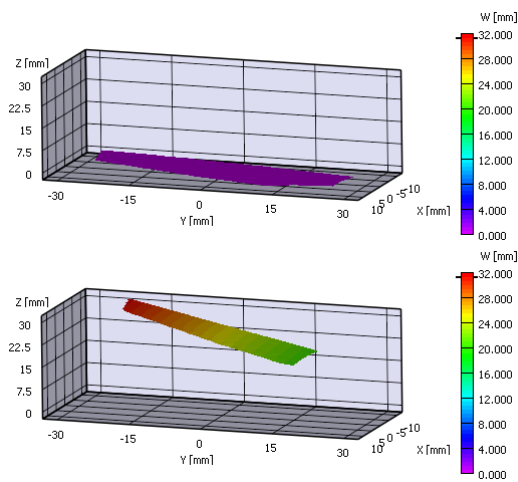
Projectile impact test e_1 strain of kevlar body armour



Contour measurement of a building wall.

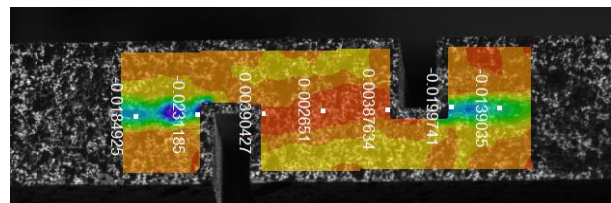


Egg strain distribution of gear component. Measurement area of 3mm²



Measurement of a damped vibration.

exy of a bonded notched wooden tensile test sample. Highest shearstrain gradients in bonded areas.



[Features]

- Displacement & strain analysis [2D or 3D results]
- Contact less & Full field
- Laptop or desktop system
- High resolution or high speed cameras
- Accuracy of 0.01 pixel for displacement and 0.01% for strain
- Strain range: Up to 500%
- Measurement field range: From 10mm² to 10m²

[Contact]

Tel.: +49 (0) 2151 36528 00, Fax.: +49 (0) 2151 36528 09, Email: info@limes.com